



## DSL-Networkmonitor

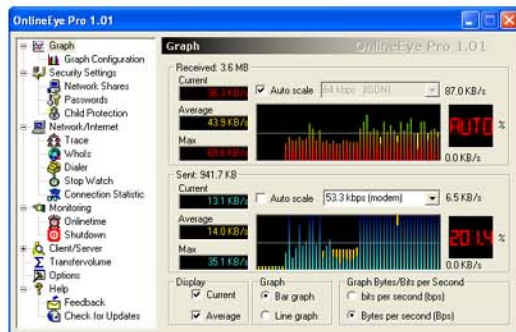
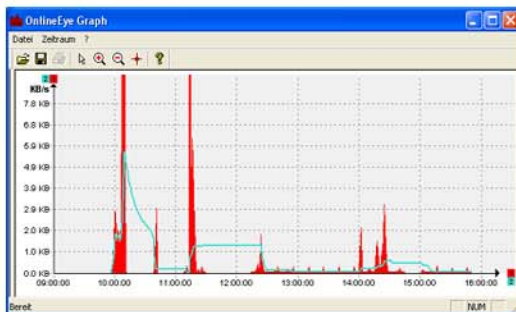
Historical Data and Internetsecurity



OnlineEye Pro is a network utilities suite that comes with a real-time graphic analyzer to measure upload/download speeds and track historical data.

The graph can be customized and also runs in the system tray as dynamic icon, allowing you to keep an eye on internet activity at all times. The program also provides tools to view all current connections, trace connections, view network shares, and more. In addition, it includes an internet dialer, a connection speed measuring tool, a port scanner, timed shutdown and some other tools. OnlineEye Pro can also run in a client/server mode, allowing you to gather statistics on a remote machine. A well featured and inexpensive utility suite for any Internet user

Onlineeye works with virtually all types of network connections: phone modems, DSL, cable modem, LAN, satellite, and more.



Source	src port	Destination	dest port	Proto	Traffic	bytes/sec	Average b/s
marioxp.mshome.net	3018	noteb_pma.mshome.net	netbios-ssn	TCP	1719	0	
noteb_pma.mshome.net	netbios-ssn	marioxp.mshome.net	3018	TCP	30561	0	

## Features

- Measure and graph your online/network connection
- Realtime Networkmonitor
- Control your up/downloadrate at a month base
- Historic graph - up/downloadrate of the last 24h
- Control your onlinetime
- Checks for internet-spyware
- Whois connected to your Computer ?
- How fast is your provider ?
- Ping, Whols, Trace, Dialer, PortScanner
- Internet Dialer
- Remote Control
- Client/Server: share your connection
  
- Permits close supervision of uploads and downloads
- Works with Dial-Up, ISDN, Cable, ADSL, Ethernet
- Min. screen real estate and system resources
- Simple installation
- Involves no changes to your Windows system files
- Configurable to load with Windows
- Readout in either kB/sec or kbps (kilobits/second)
- Scalable to your own modem download capabilities
- Actions if activity drops below a certain level
- Warning Messages if a certain time level is reached
- Stopwatch to accurately time downloads
- Helps you to be protected against network threats

Onlineeye requires 4 MB Diskspace and is running with Win 9x/NT4/2000/XP.